





Danske Bank – Covered Bond Framework

H1 2022

Danske Bank covered bond universe, a transparent pool structure¹

 	<div data-bbox="741 339 975 375"> <p>Danske Bank</p> </div> <div data-bbox="312 458 718 491"> <p>Residential mortgages from</p> </div> <ul data-bbox="312 511 845 705" style="list-style-type: none"> • Denmark, D-pool • Norway, I-pool • Sweden, Danske Hypotek AB • Finland, Danske Mortgage Bank Plc <div data-bbox="312 782 731 815"> <p>Commercial mortgages from</p> </div> <ul data-bbox="312 835 741 868" style="list-style-type: none"> • Sweden and Norway, C-pool
 	<div data-bbox="816 953 975 1001"> <p>REALKREDIT Danmark</p> </div> <div data-bbox="319 1072 946 1143"> <p>Pass-through principle based on mortgages from primarily Denmark</p> </div> <ul data-bbox="319 1163 975 1290" style="list-style-type: none"> • Capital Centre T, Adjustable-rate mortgages • Capital Centre S, Fixed-rate callable mortgages



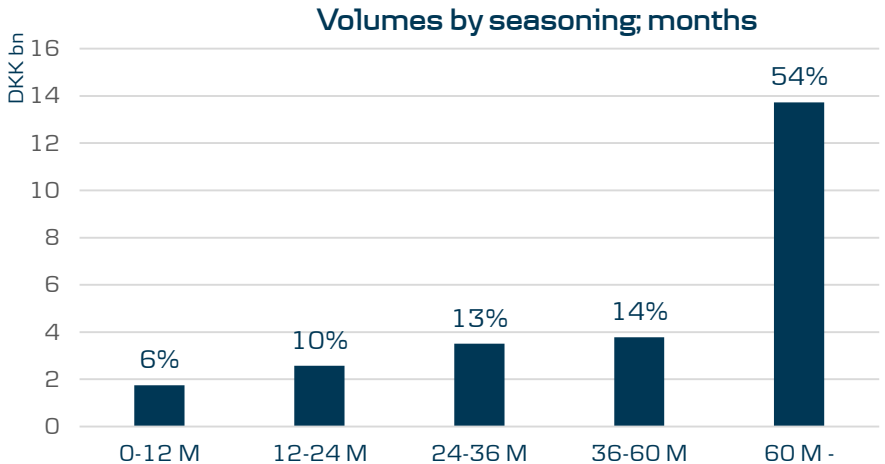
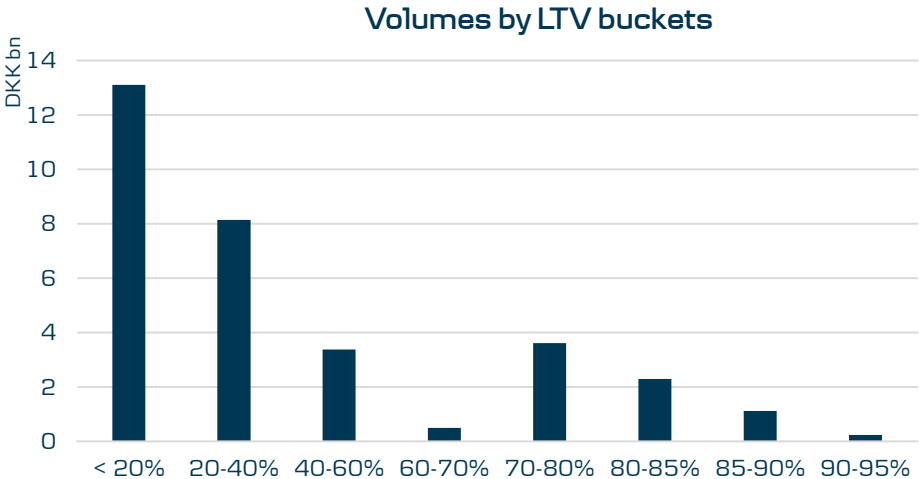
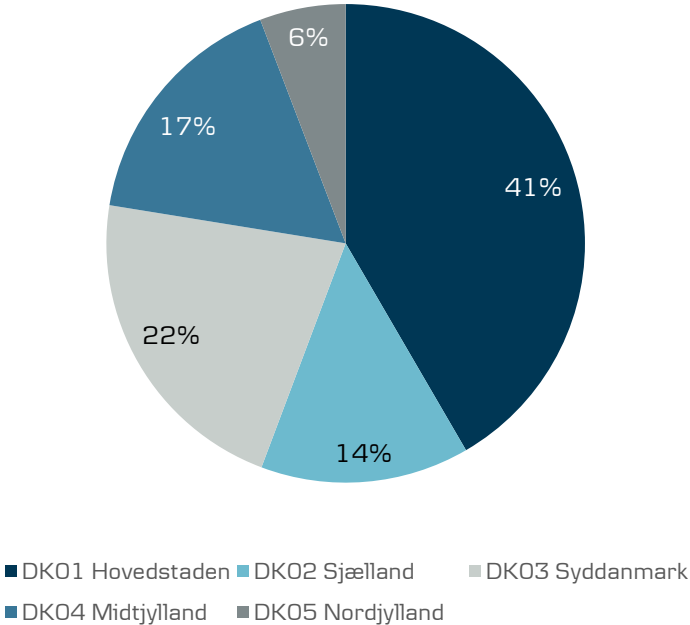
¹ The migration to Danske Hypotek of Swedish residential loans from Danske Bank's I-pool and Swedish residential-like loans from Danske Bank's C-pool is ongoing. Details of the composition of individual cover pools can be found on the respective issuers websites

Danske bank Cover pool D characteristics

(as of 30th June 2022)

Pool notional	DKK 25,3bn
Collateral type	100% residential mortgages to private individuals (Retail)
Number of Loans	41,040
Number of Borrowers	39,932
Number of Properties	40,320
Average Loan Size	DKK 617,511
Property Type	100% Residential
WA LTV	45.1%
WA Seasoning	8.4 years
Repayment type	38.3% Amortizing, 61.7% Interest Only
Pool type	Dynamic
Rate type	57% Floating Rate, 43% Fixed Rate
Issuance Notional	DKK 23.5bn
OC	6.7%
Geographical location	100% in Denmark
Pool Cut-off Date	30-06-2022

Regional distribution by loan volume, %

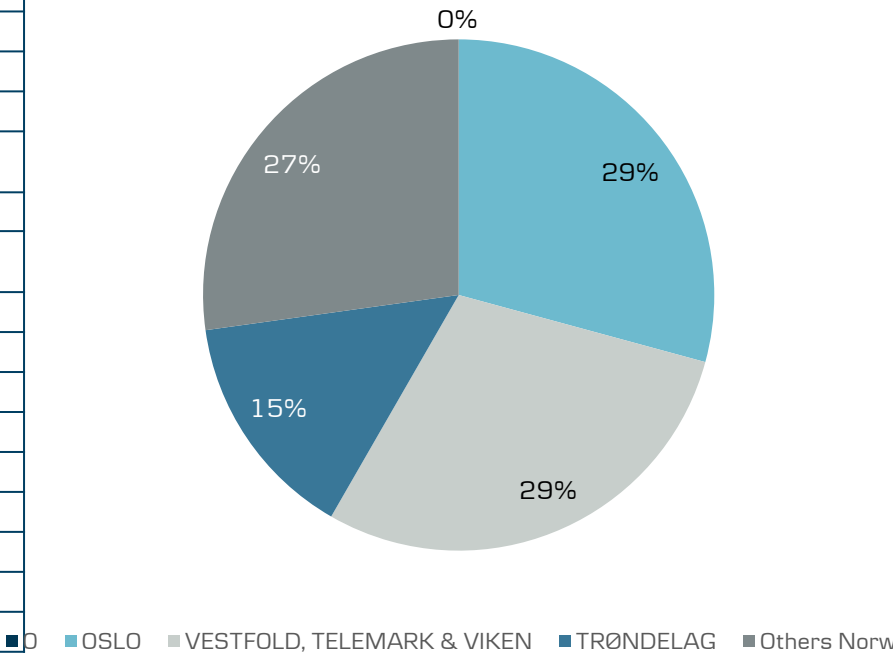


Danske bank Cover pool I characteristics

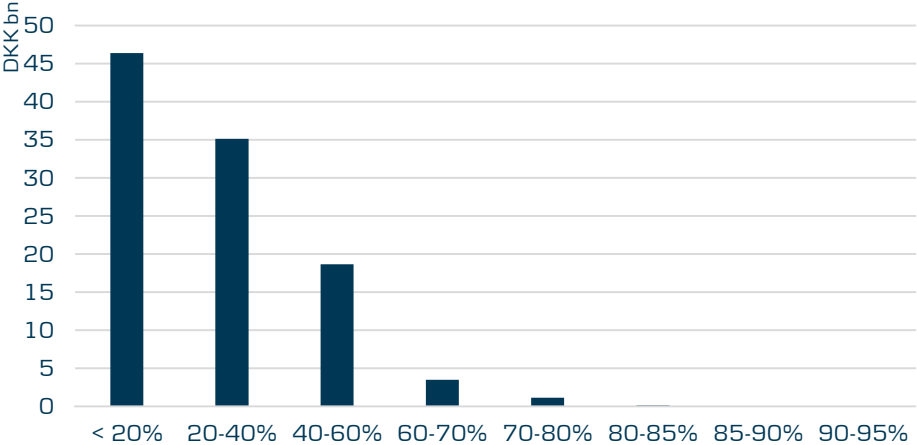
(as of 30th June 2022)

Pool notional	DKK 105,2bn
Collateral type	100% residential mortgages to private individuals (Retail)
Number of Loans	61,096
Number of Borrowers	53,067
Number of Properties	61,141
Average Loan Size	DKK 1,721,962
Property Type	100% Residential
WA LTV	51.9%
WA Seasoning	4.1 years
Repayment type	8.7% Amortizing, 91.3% Interest Only
Pool type	Dynamic
Rate type	92.6% Floating Rate, 7.4% Fixed Rate
Issuance Notional	DKK 88.9bn
OC	17.8%
Geographical location	96.3% in Norway
Pool Cut-off Date	30-06-2022

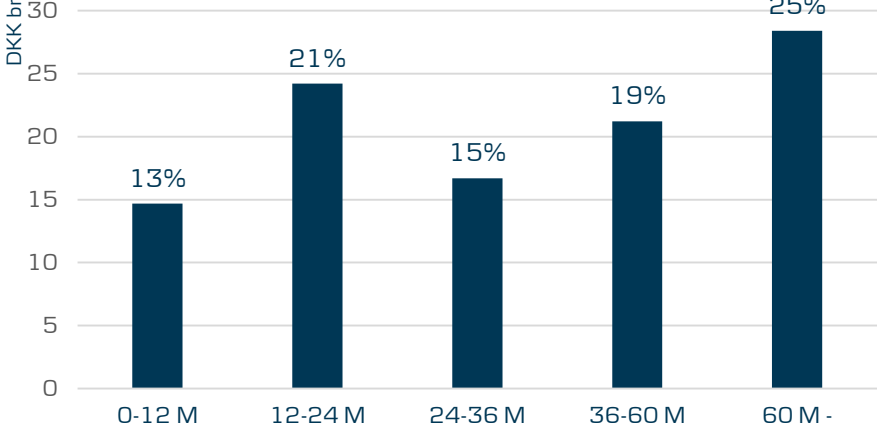
Regional distribution by loan volume, %



Volumes by LTV buckets



Volumes by seasoning, months

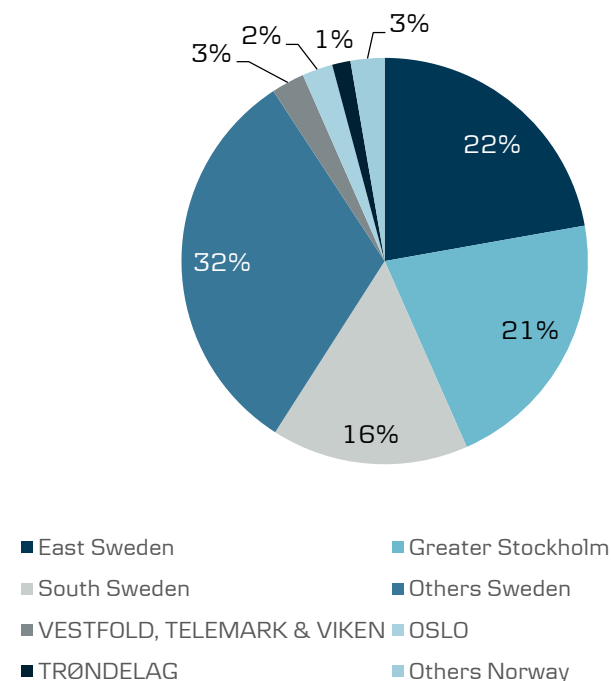


Danske bank Cover pool C characteristics

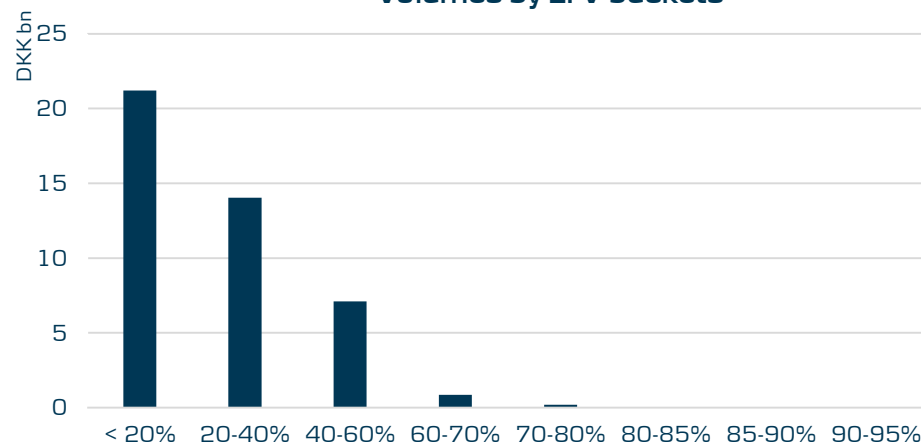
(as of 30th June 2022)

Pool notional	DKK 43,5bn
Collateral type	100% residential mortgages to private individuals (Retail)
Number of Loans	4,851
Number of Borrowers	3,617
Number of Properties	5,563
Average Loan Size	DKK 8,975,515
Property Type	36.1% Residential, 34.3% Retail, 15.9% Agriculture, 12.7% Industrial, 1% Other
WALTV	47.4%
WA Seasoning	1.8 years
Repayment type	21.9% Amortizing, 78.1% Interest Only
Pool type	Dynamic
Rate type	62.8% Floating Rate, 37.2% Fixed Rate
Issuance Notional	DKK 35.7bn
OC	21.1%
Geographical location	23.8% in Norway, 76.2% in Sweden
Pool Cut-off Date	30-06-2022

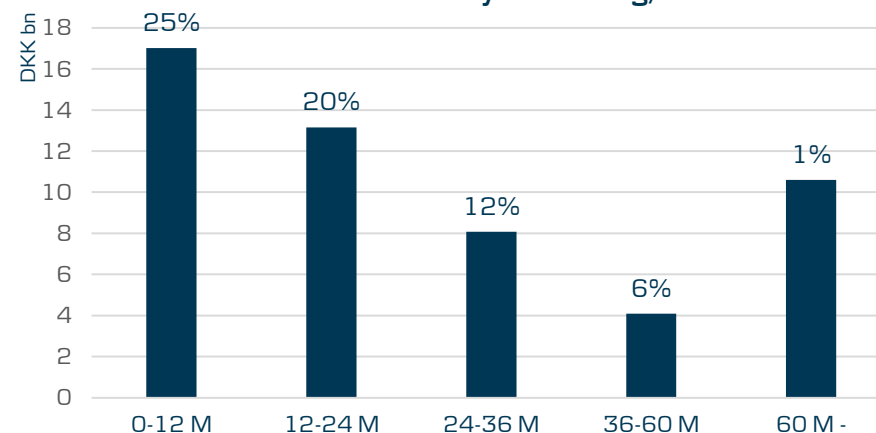
Regional distribution by loan volume, %



Volumes by LTV buckets



Volumes by seasoning, months

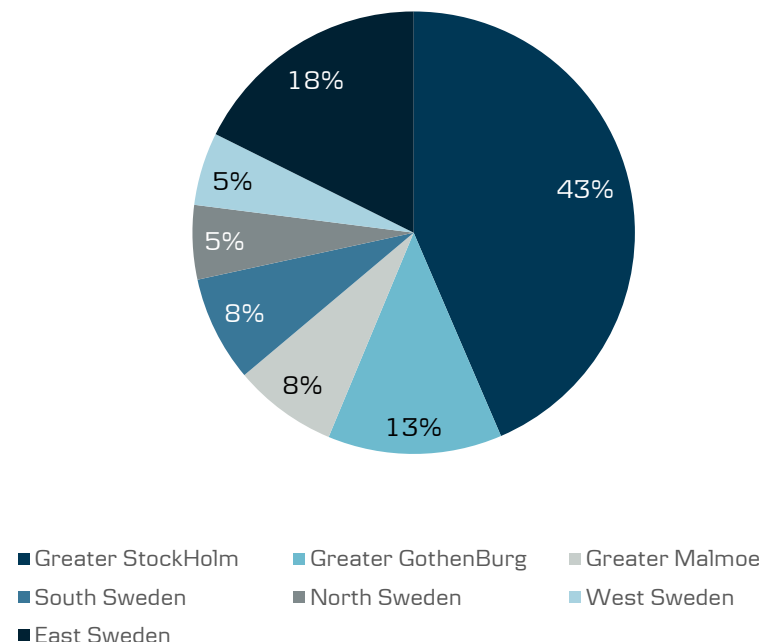


Danske Hypotek Cover pool characteristics

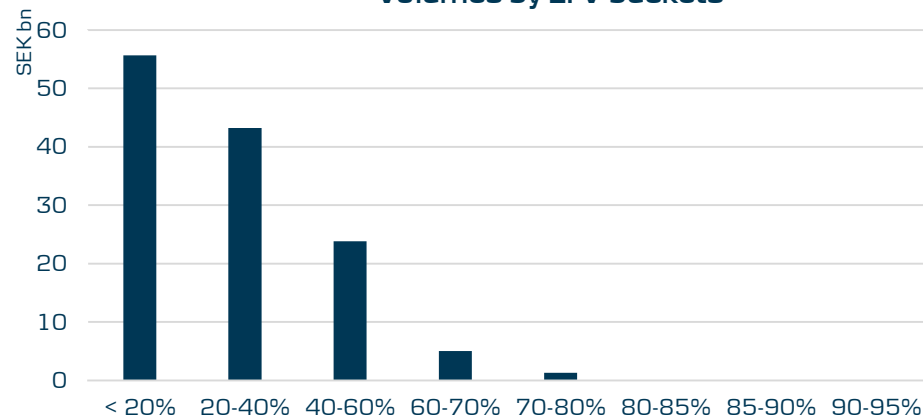
(as of 30th June 2022)

Pool notional	SEK 129,1bn
Collateral type	100% residential mortgages to private individuals (Retail)
Number of Loans	117868
Number of Borrowers	55562
Number of Properties	57290
Average Loan Size	SEK 1,096m
Property Type	54.04% Owner-occupied, 40.77% Housing Cooperatives, 1.65% Rental Housing, 0.01% Construction, 0.01% Cultur, 3.37% Holiday Housing, 0.16% Businesses
WALTV	53,66%
WA Seasoning	4,9 years
Repayment type	53.31% Amortizing, 46.69% Interest Only
Pool type	Dynamic
Rate type	1.39% Floating Rate, 98.61% Fixed Rate
Issuance Notional	SEK 104,9bn
OC	72.27%
Geographical location	
Pool Cut-off Date	06-30-2022

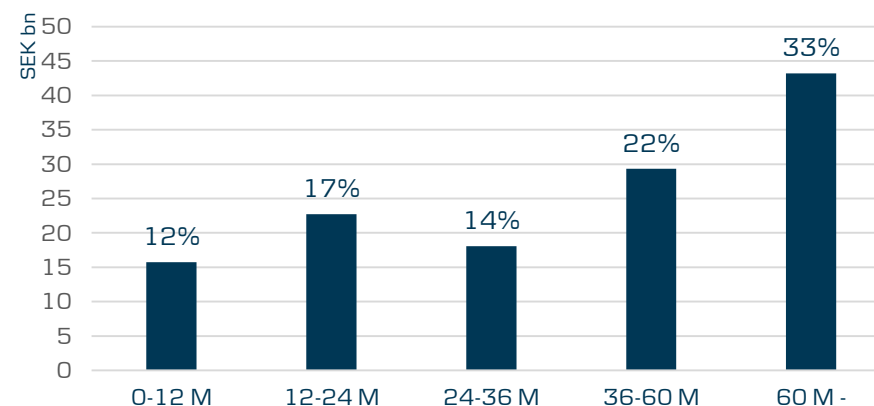
Regional distribution by loan volume, %



Volumes by LTV buckets



Volumes by seasoning, months

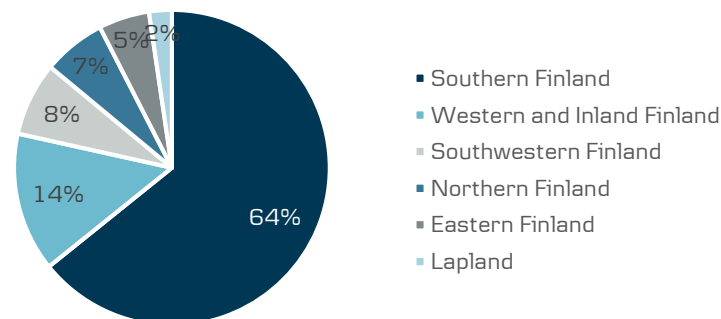


Danske Mortgage Bank Plc pool characteristics

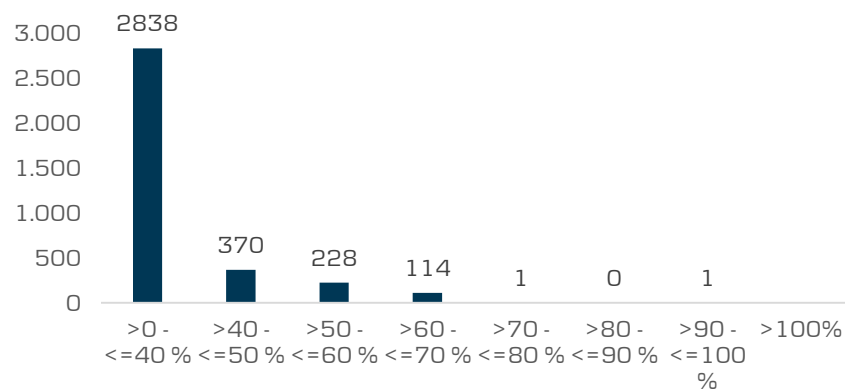
[as of 30th June 2022]

Pool notional	EUR 2.25b
Collateral type	100% residential mortgages to private individuals (Retail)
Number of Loans	48,182
Number of Borrowers	58,564
Number of Properties	46,694
Average Loan Size	EUR 74 thousand
Property Type	100% Finnish residential properties, no commercial mortgages
WA LTV	47%
WA Seasoning	7.4 years
Repayment type	100% Amortizing
Pool type	Dynamic
Rate type	98% Floating rate, 2% Fixed rate
Issuance Notional	EUR 2.25 bn
OC	57.8%
Geographical location	100% Finland
Pool Cut-off Date	30-06-2022

Regional distribution by loan volume, %



Volumes by LTV bucket; EURm



Volumes by seasoning; EURm

